

## <sup>1</sup>6.13 C5 – Fort Mall Redevelopment District

### 6.13.1 Purpose

This District is generally intended to provide regulations for the redevelopment of the Fort Mall site as envisioned in the Downtown Area Redevelopment Plan & Design Guidelines (Bylaw C14-08). A variety of land uses are supported in this district including residential, commercial, and mixed-use. Higher densities and scale greater than seen elsewhere in Fort Saskatchewan are supported, with high rise buildings accommodated in specific locations provided that the design ensures development relates to the adjacent areas and provides harmonious transitions. Open space and pedestrian connections will be provided to ensure ease of movement to and from the area, and opportunities for recreation. Special emphasis shall be given for the creation of a high quality public realm including urban plazas, outdoor amenity areas and interactive streetscapes.

### 6.13.2 C5 Permitted & Discretionary Uses:

(a) C5 Permitted Uses	
<ul style="list-style-type: none"> <li>- <sup>2</sup>(Deleted)</li> <li>- Apartment Dwelling</li> <li>- Assisted Living Facility</li> <li>- Business Support Service</li> <li>- Commercial School</li> <li>- Community Service Facility</li> <li>- Custom Manufacturing Establishment</li> <li>- Day Care Facility*</li> <li>- Eating and Drinking Establishment</li> <li>- Eating and Drinking Establishment (limited)</li> <li>- Eating and Drinking Establishment (outdoor)</li> <li>- Emergency Response Service</li> <li>- Health Service</li> <li>- Home Office</li> <li>- Hotel</li> <li>- Indoor Entertainment Facility</li> <li>- Indoor Recreation Facility</li> <li>- <sup>3</sup>Multi-attached Dwelling**</li> </ul>	<ul style="list-style-type: none"> <li>- <sup>4</sup>(Deleted)</li> <li>- Parking Facility</li> <li>- Personal Service</li> <li>- Pet Care Service</li> <li>- Place of Worship</li> <li>- Private Club</li> <li>- Professional, Financial, and Office Service</li> <li>- Public Facility</li> <li>- Retail Store (convenience)</li> <li>- Retail Store (general)</li> <li>- Retail Store (liquor)</li> <li>- Seasonal Garden Centre (temporary)</li> <li>- Show Home</li> <li>- Sign (Fascia)</li> <li>- Sign (Freestanding)</li> <li>- Sign (Identification)</li> <li>- Sign (portable)</li> <li>- Sign (Projecting)</li> <li>- Temporary Sales Centre</li> <li>- <sup>5</sup>Accessory development to any use listed in subsection 6.13.2(a)</li> </ul>

<sup>1</sup> C22-14

<sup>2</sup> C19-15

<sup>3</sup> C10-16

<sup>4</sup> C19-15

<sup>5</sup> C19-15

<b>(b) C5 Discretionary Uses</b>	
<ul style="list-style-type: none"> <li>- Casino</li> <li>- Government Service</li> <li>- Greenhouse</li> <li>- <b>Kennel</b></li> <li>- Late Night Club</li> <li>- Live Work Unit</li> <li>- <sup>1</sup>(Deleted)</li> <li>- Outdoor Recreation Facility</li> <li>- Pawn Shop</li> </ul>	<ul style="list-style-type: none"> <li>- Temporary Outdoor Event</li> <li>- Vehicle Sales, Leasing or Rental Facility (limited)</li> <li>- Veterinarian Clinic</li> <li>- <sup>1</sup>(Deleted)</li> <li>- <sup>1</sup>Accessory development to any use listed in subsection 6.13.2(b)</li> </ul>

\*Day Care Facility may not occur within an apartment dwelling

\*\* Multi-attached Dwellings shall be limited to the Periphery Zone, as per Figure 6.13a

### 6.13.3 Site Development Regulations

	Interior or Corner Site	
<b>a) Site Area</b>	Minimum	300.0m <sup>2</sup> (3229.2ft <sup>2</sup> )
	Maximum	N/A
<b>b) Site Width</b>	Minimum	At the discretion of Development Authority
	Maximum	At the discretion of Development Authority
<b>c) Front Setback</b>	Minimum	<b><sup>2</sup>Non-residential uses at ground floor</b> 0.0m (0.0ft) to 1.4m (4.6m) to achieve a continuous pedestrian zone of 3.4m (11.2ft)
		<b>Residential uses at ground floor</b> 3.0m (9.8ft) with display gardens
		<b>Residential uses at ground floor abutting MR</b> 1.0m (3.3ft) with display gardens in the MR
<b>d) Side Setback</b>	Minimum	<sup>3</sup> 0.0m (0.0ft)
<b>e) Rear Setback</b>	Minimum	<sup>4</sup> 0.0m (0.0ft) when abutting a Non-Residential Land Use District
		4.5m (14.8ft) or one-half (1/2) the height of the building, whichever is greater, for sites abutting a Residential Land Use District

<sup>1</sup> C10-16

<sup>2</sup> C10-16

<sup>3</sup> C10-16

<sup>4</sup> C10-16

f) Site Coverage	Maximum	70%
g) FAR	Maximum	<sup>1</sup> 4.0
h) Unit Density	Maximum	<sup>2</sup> 200 units per net developable hectare for sites less than 1500.0m <sup>2</sup>  350 units per net developable hectare for sites greater than 1500.0m <sup>2</sup>
i) Height		As per Section 6.13.4 of this Bylaw
j) <sup>3</sup> Common Amenity Area	Minimum	<b>Apartment Dwellings</b> 4.5m <sup>2</sup> (48.4ft <sup>2</sup> ) per dwelling unit  <b>All other Residential Dwellings</b> At the discretion of the Development Authority. This can include indoor and outdoor amenities such as seating areas and roof top patios
j) <sup>4</sup> Private Amenity Area	Minimum	<b>Residential Dwellings at Grade and Above Grade</b> 3.0m <sup>2</sup> (32.3ft <sup>2</sup> ) per dwelling unit to be provided by balconies, decks, patios or rooftop amenity area***  <b>Residential Dwellings Below Grade</b> To be provided through the common amenity area

\*\*\* Private Amenity Area shall only be provided by balconies in Apartment Dwellings

## Urban Design Regulations

### 6.13.4 Urban Form

- a) Maximum building height shall be determined based upon:
  - i. <sup>5</sup>The location of the building in proximity to the public roadways, as per Figure 6.13a; and
  - ii. <sup>6</sup>Along 98 Avenue, new development shall have a minimum height of 2 storeys when located in the Periphery Zone, and a minimum height of 4 storeys in the Centre Zone, as per Figure 6.13a.

---

<sup>1</sup> C10-16

<sup>2</sup> C10-16

<sup>3</sup> C10-16

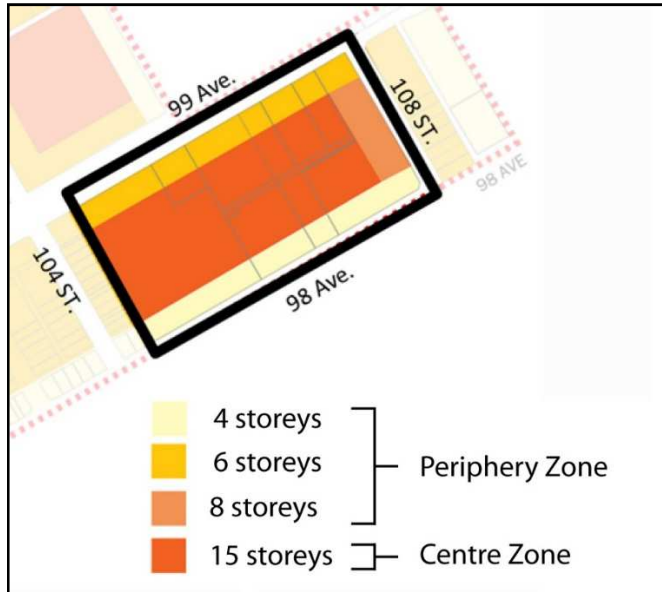
<sup>4</sup> C10-16

<sup>5</sup> C23-14

<sup>6</sup> C10-16

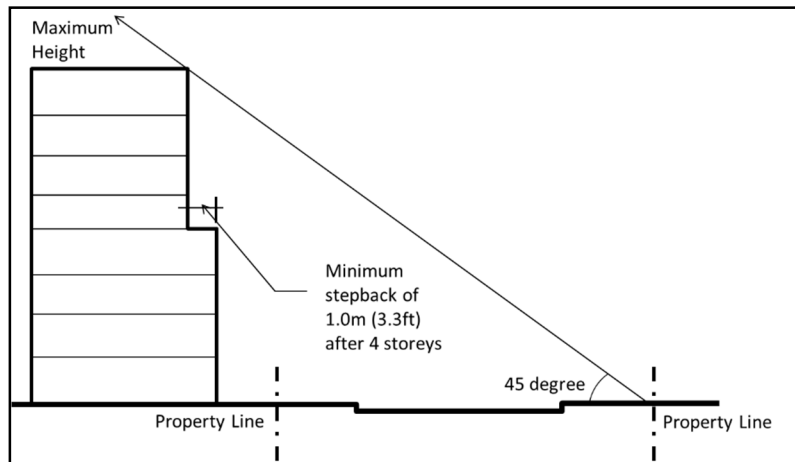
- iii. <sup>1</sup>Building heights shall be transitioned through appropriate stepbacks as per Figure 6.13a.

<sup>23</sup>Figure 6.13a: Fort Mall Site Maximum Heights Diagram



- b) The maximum building height for buildings greater than 5 storeys shall be limited by the application of a 45 degree angular plane, as per Figure 6.13b.

Figure 6.13b: 45 Degree Angular Plane Method for Determining Height Maximums



<sup>1</sup> C10-16

<sup>2</sup> C23-14

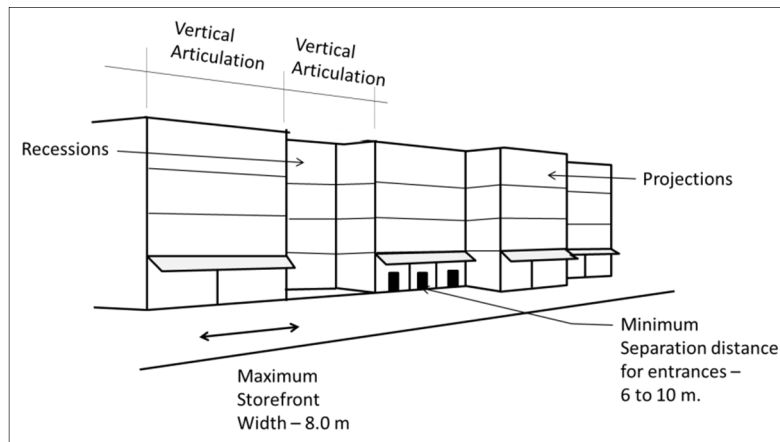
<sup>3</sup> C10-16

- c) The maximum parapet height for all new buildings shall not exceed 1.5m (4.9ft); and
- d) Vents, mechanical rooms and equipment, elevator penthouses etc. shall be integrated into the architectural treatment of building roof or screened with materials and finishes compatible with the building.

#### 6.13.5 Street Character and Pedestrian Realm

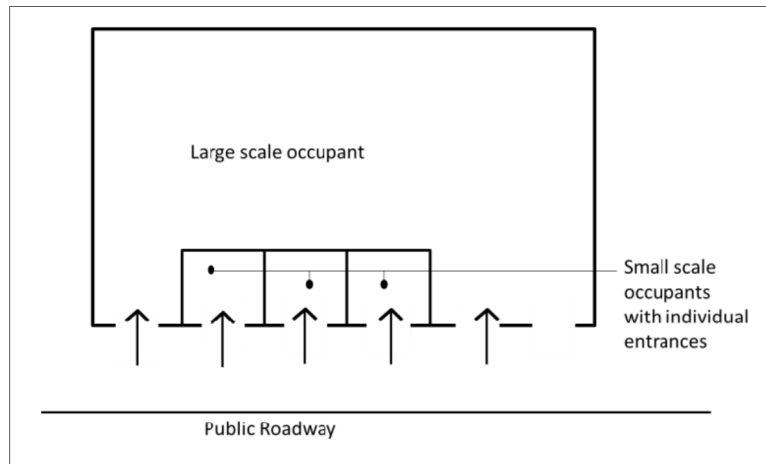
- a) For buildings where the ground floor is occupied by non-residential tenancy, the front setback shall be hard surfaced with a consistent treatment and theme from the City sidewalk to the satisfaction of the Development Authority;
- b) To avoid monotony in architecture, all buildings shall be required to provide a vertical articulation in the streetwall fronting public roads using a variety of colours, materials, projections as well as recessions in the building façade, as per (Figure 6.13c);

**Figure 6.13c: Vertical Articulation Specifications**



- c) Individual retail store frontages along 99 Avenue at ground floor shall not exceed 8.0m (26.3ft) in width, as per Figure 6.13c;
- d) Where feasible, entrances for commercial and office uses shall be located at intervals of 6.0m to 10.0m (19.7ft to 32.8ft) along building façades fronting public roadway; and
- e) For new construction, large scale commercial uses at ground floor shall be required to provide small scale individualized tenancy fronting the public roadway, as per Figure 6.13d.

**Figure 6.13d: Small Scale Occupancy in Large Scale Commercial Uses**



#### **6.13.6 Open Space and Linkages**

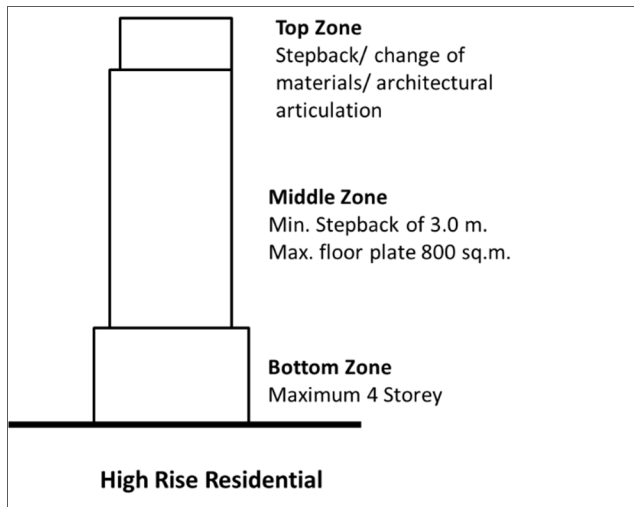
- a) A minimum 15% of the Fort Mall site area shall be dedicated as publically-accessible open space that is connected to the wider city level open space network;
- b) Open space shall be developed and landscaped in accordance with Section 4.8 to 4.11 of this Bylaw. In addition, street furniture such as benches, waste receptacles, garden lighting, etc. may be required to enhance the open space to the satisfaction of Development Authority; and
- c) New private or public roads in this district shall be designed in a manner to re-establish the typical block pattern and the street grid found in Fort Saskatchewan's downtown.

#### **6.13.7 Building Massing and Architectural Character**

- a) Buildings at the intersection of the following streets shall be required to incorporate special architectural treatment to mark entrances to the downtown and key focal points:
  - i. 99 Avenue and 106 Street; and
  - ii. 99 Avenue and 108 Street.
- b) Buildings more than 5 storeys shall provide three distinct vertical zones, as per Figure 6.13e, and meet the following step back requirements:

- i. The base zone shall be a minimum of two storeys and a maximum four storeys, and shall be integrated with townhouses, apartments or commercial retail units; and
- ii. The middle zone shall provide a minimum setback of 3.0m (9.8ft) and a maximum floor plate of 800m<sup>2</sup> (8611ft<sup>2</sup>).
- iii. The top zone shall be required for high rise buildings and shall include the top three stories. The top zone shall provide either an additional setback or a change in material/colour or special architectural treatment to the satisfaction of the Development Authority.

**Figure 6.13e: Vertical Zones in Mid-rise and High-rise Buildings**



- c) A minimum separation distance of 25.0m (82.0ft) measured perpendicularly to building face shall be provided between the shafts (middle zones) of two high rise towers;
- d) Building façade on corner sites shall address both public roadways;
- e) New developments shall be encouraged to incorporate public art into building façades; and
- f) Large blank façades with opaque surfaces shall be minimised to the satisfaction of the Development Authority.

#### **6.13.8 Pedestrian Entrances**

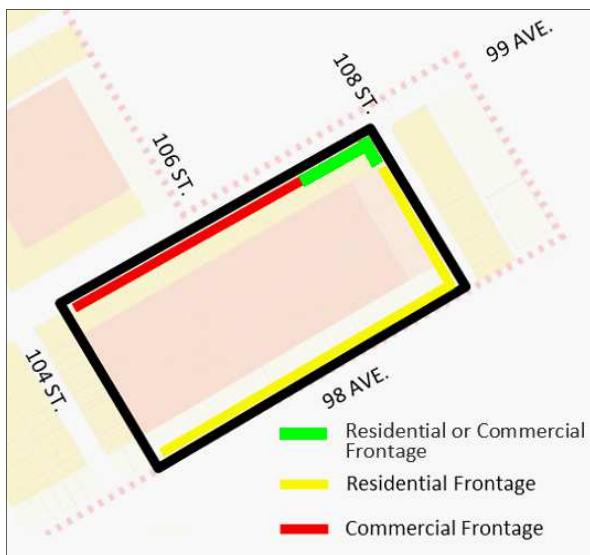
- a) Ground floor entrances for commercial/office uses shall be level with grade of the adjacent sidewalk;

- b) Ground floor entrances for residential units fronting public road shall provide a 1.0m (3.3ft) grade separation from adjacent sidewalk to provide visual privacy for residential units; and
- c) Entrances to commercial uses at ground floor and residential uses above ground level shall be architecturally differentiated from each other.

#### 6.13.9 Ground Floor Treatment

- a) The land uses along ground floors of all buildings shall be as per Figure 6.13f, whereas:
  - i. Ground floor uses along 99 Avenue shall be limited to commercial or residential development;
  - ii. Ground floor uses along 98 Avenue shall be limited to residential development; and
  - iii. <sup>1</sup>(Deleted)

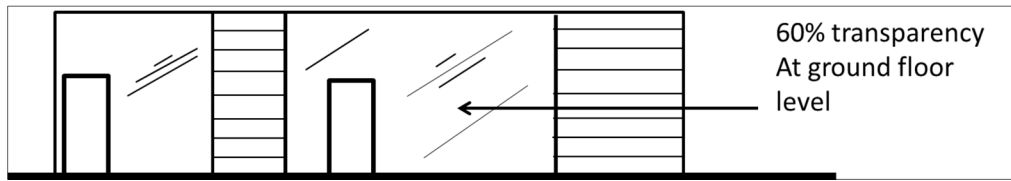
**Figure 6.13f: Ground Floor Frontage Use Designations**



- b) Facade improvement or facades for newly constructed buildings with non-residential uses located on the ground floor facing a public street or public area shall provide a minimum 60% transparency on the ground floor level to encourage pedestrian interactions and safety, as per Figure 6.13g.

<sup>1</sup> C10-16

**Figure 6.13g: Transparency in Ground Level Commercial Developments**

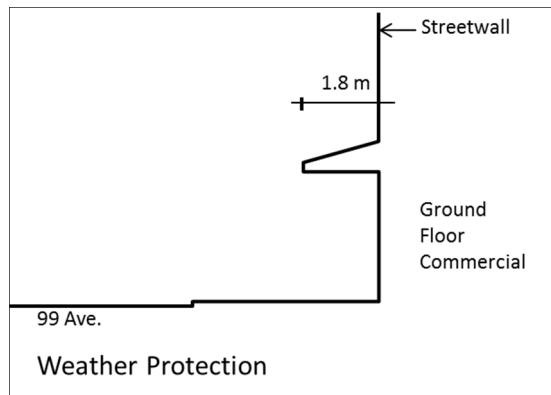


- c) Principal entrances of dwelling units or commercial retail units provided at the ground floor level shall provide direct access to the adjacent public sidewalk.

#### **6.13.10 Canopies and Weather Protection**

- a) A continuous weather protection of minimum 1.8m (5.9ft) width at the ground floor of all building façades fronting 99 Avenue shall be encouraged, as per Figure 6.13h.

**Figure 6.13h: Canopies and Weather Protection**

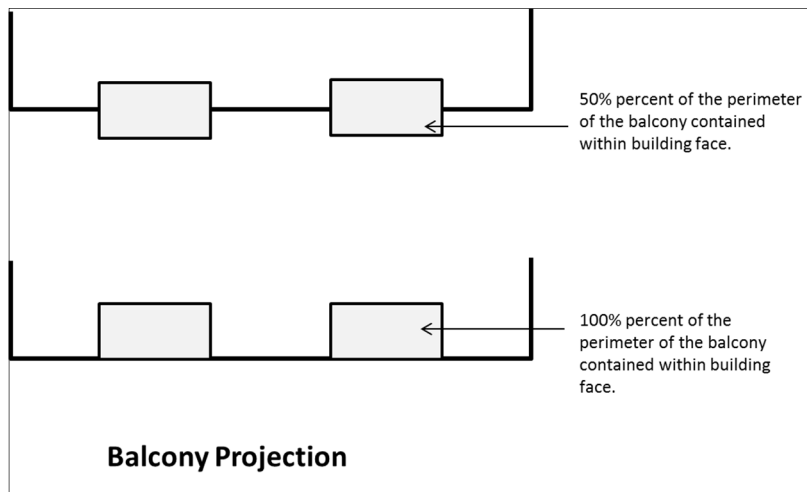


#### **6.13.11 Building Projections**

- a) <sup>1</sup>Balconies on the streetwall shall be partly or fully recessed from the building face with approximately 50% of their perimeter contained by exterior walls of the building, as per Figure 6.13i.

<sup>1</sup> C10-16

**Figure 6.13i: Balcony Projection**



- b) Balcony projections may project beyond the floor plate restrictions or the front streetwall up to a maximum of 1.0m (3.3ft) but shall in no case project beyond the property line.

#### **6.13.12 <sup>1</sup>General Parking Requirements**

- a) On-site parking should be provided at the rear or sides of buildings, within underground parkade or above-ground parking structures. Surface parking areas should not be developed adjacent to any public roadway other than a lane, unless a suitable interface with the abutting street is provided to the satisfaction of the Development Authority.
- b) Corner sites may have surface parking areas located on the side of the building, facing the flanking roadway when screened from public view.
- c) The Development Authority may consider granting additional Floor Area Ratio, if the applicant agrees to provide underground parking stalls to meet all parking requirements of the project.
- d) Uses and developments not specified in an approved Parking Impact Assessment shall meet the Minimum Parking Requirements for Downtown, as per Table 11.e. Drive-through service should be limited;
- e) Structured parking facilities shall generally be provided at locations internal to the site. If such parking facilities are located fronting a public roadway, then the following design considerations shall be utilized:

---

<sup>1</sup> C10-16

- i. Ground floor shall include retail uses with multiple entrances;
- ii. Entrance to the parking facility shall be designed with special architectural treatment to maintain the integrity of retail frontage; and
- iii. The facade of the upper storeys of the parking facility shall be designed to reflect residential or commercial building character.

#### **6.13.13 <sup>1</sup>Circulation, Accesses, Loading and Waste Collection**

- a) <sup>2</sup>(Deleted)
- b) All vehicular access to parking and on-site service areas, parking facilities, waste storage/collection areas as well as loading facilities shall be screened from public roadways using enhanced landscape treatment or special architectural features.
- c) Where possible, vehicular entrances to underground parking facilities and passenger drop-off areas shall be provided from the rear of buildings.
- d) Internal roadway network shall be designed to improve walkability and reduce shortcutting by vehicular traffic.
- e) <sup>3</sup>(Deleted)
- f) <sup>4</sup>(Deleted)
- g) <sup>5</sup>(Deleted)
- h) Garbage and recycling containers shall provide a minimum setback of 1.0m (3.3ft) from a property line and be screened using appropriate architectural or landscaping treatment to the satisfaction of Development Authority.
- i) <sup>6</sup>(Deleted)

---

<sup>1</sup> C10-16

<sup>2</sup> C10-16

<sup>3</sup> C10-16

<sup>4</sup> C10-16

<sup>5</sup> C10-16

<sup>6</sup> C10-16

#### **6.13.14 Signage**

- a) Buildings on corner sites shall provide signage on both building façades; and
- b) Projecting signs may project beyond the streetwall by a maximum of 1.0m (3.3ft) and should be restricted to ground floor only.

#### **6.13.15 Outside enclosures for Kennels**

- a) Outdoor enclosures for kennels shall be located to minimize impact on surrounding developments, and shall be enclosed on all sides by fencing or landscaping, or a combination of both.

#### **6.13.16 Additional Development Regulations for C5**

- b) <sup>1</sup>All development and uses within this Land Use District are subject to the applicable provisions of Part 4 - General Regulations for all Land Use Districts, Sections 6.1 to 6.7 of Part 6 - Commercial Land Use Districts, Part 11 - Parking and Loading, and Part 12 – Signs.
- c) Except for off-street parking, loading areas and approved patios, all business activities shall be carried out entirely within completely enclosed buildings or structures. Sidewalk sales, tent sales, or farmers markets shall be considered in the approved open space areas such as parking lots or plazas in accordance with the regulations for Temporary Outdoor Events; and
- d) The siting and appearance of all buildings or improvements, and the landscaping of the site shall be to the satisfaction of the Development Authority in order that there shall be general conformity with adjacent buildings, and that there may be adequate protection afforded to the amenities of adjacent buildings and sites. The form and character of buildings shall complement adjacent residential character of the neighbourhood.

---

<sup>1</sup> C10-16

