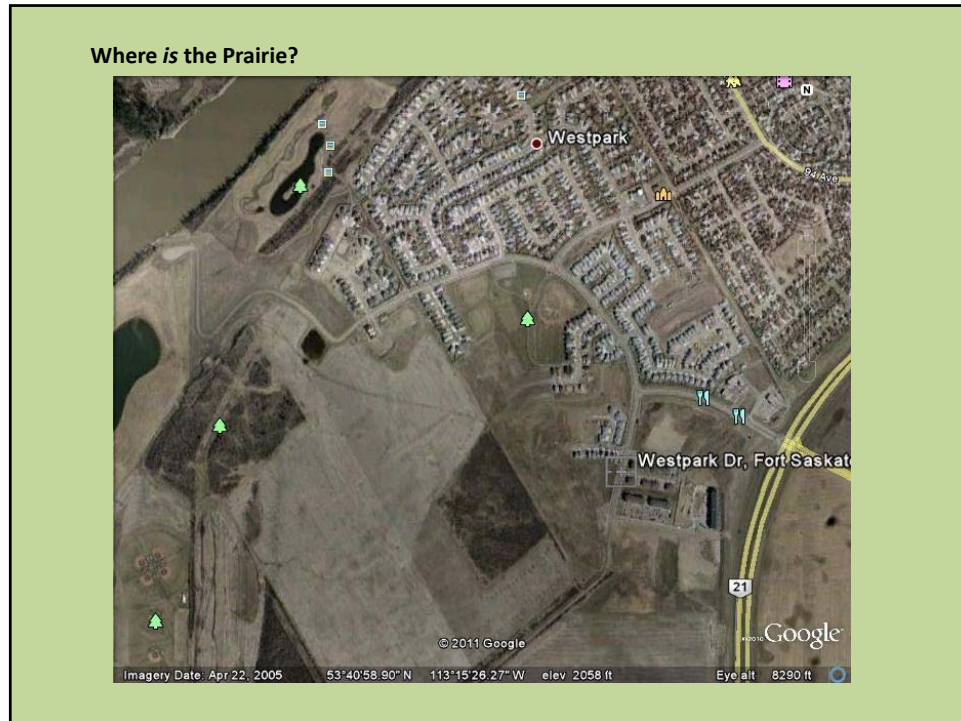


2017 Budget Presentation

Fort Saskatchewan Prairie

City of Fort Saskatchewan
Fort Saskatchewan Stewardship Program







Objectives of the Fort Saskatchewan Prairie Stewardship Program

- improve and maintain the natural integrity of the Prairie by appropriate site management
- recruit volunteers so that sustainable stewardship can be maintained
- outreach and provide interpretation to the community (achieved so far with brochures and a bulletin board)
- consult with City Council, Administration and the community on issues important to maintaining the health of the Prairie.



View looking north, winter,
2005

Management Activities in 2016

- Weeded and prepared beds for transplanting on the northernmost slope and “hollow” and in the “second hollow” where there was extensive infestation of weeds.
- Transplanted native plants from a sandy soil pasture near Gibbons that is to be stripped for road widening.
- Transplanted with nursery-raised transplants.
- Mulched and watered the beds.
- Weeded the area generally. Weeding was done by hand-pulling, digging and some use of herbicide.
- Maintained the trail (now largely a single-file trail).
- Collected seed for raising of transplants.
- Liaised with the City for water provision and garbage removal.

Note: Both volunteer and paid labour was used in these management activities in the ratio of 64 paid hours to 95 volunteer hours.



Activities Planned for 2017

- An early-season start on weeding, using paid labour, is planned, as the most cost-effective method of keeping weeds under control. If funds permit, regular weeding will continue throughout the season.
- More transplanting of plants grown off-site, but raised from seed collected from the Prairie.
- Record location of transplant beds and contents on a map provided by the City and monitor to assess survival and growth.
- Investigate the possibility of obtaining a community grant to employ student labour for part of the summer.
- Approach McClay Ecoscience re using the Prairie as an experimental station for biocontrol of the noxious weed yellow toadflax.
- Develop a colour brochure (Edmonton Native Plant Group) (similar to the one that already exists for the plants of Fort Saskatchewan Prairie) on the weeds (non-native plants) of the Prairie. This will help field workers discriminate between weeds and native plants.
- Organize at least one outreach event, such as a field trip, locally advertised.

2017 Budget Request: \$4,500

Paid weed control and management of transplant beds, including labour costs per hour & travelling expenses	\$3000
Nursery raising of native plants	\$750
Weed Brochure	\$ 500
Miscellaneous expenses, e.g. refreshments for volunteers, garbage bags	<u>\$ 250</u>
	<u>Total \$4,500</u>



Thank You!

Woodland Trail in Fort Saskatchewan Prairie