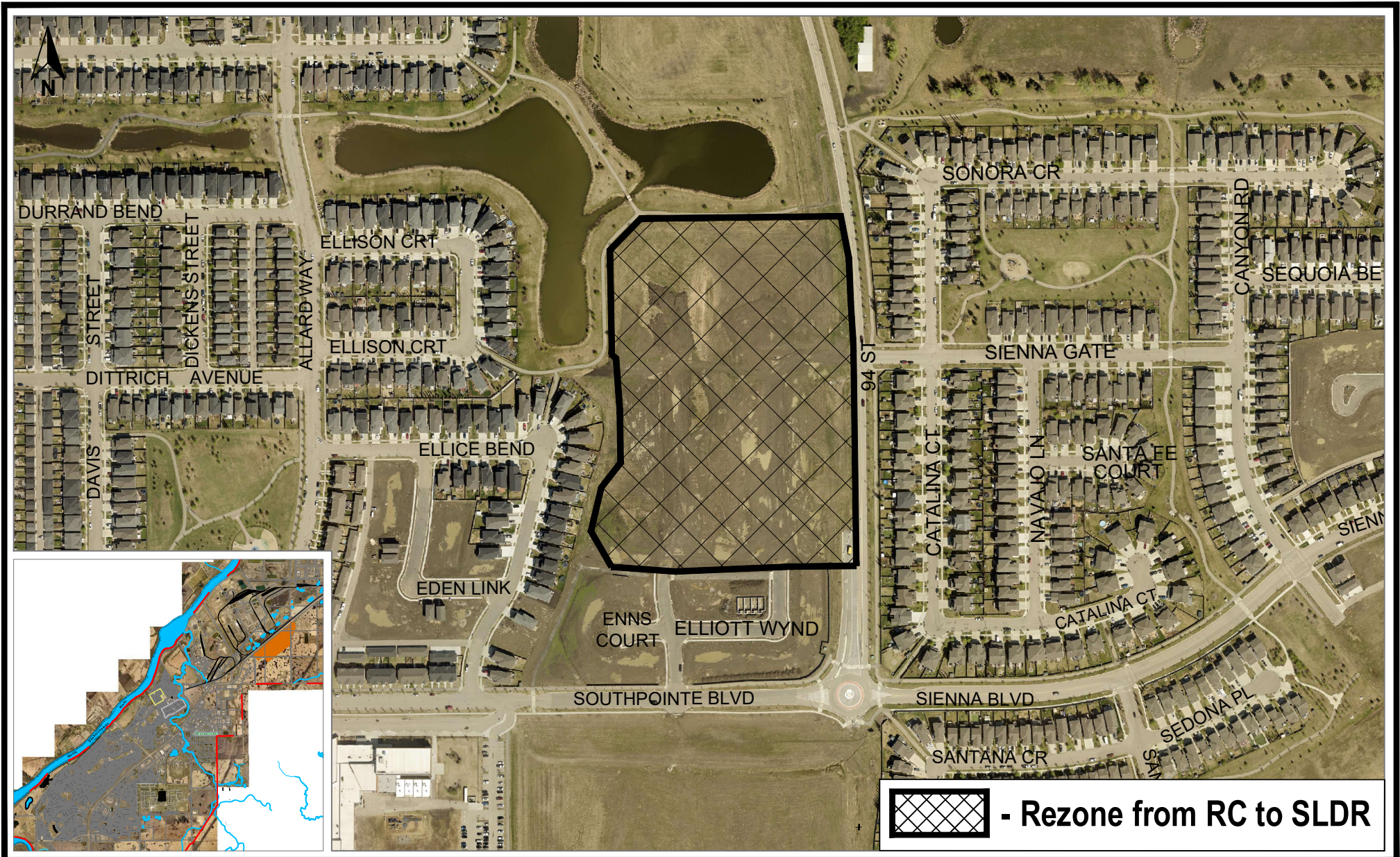


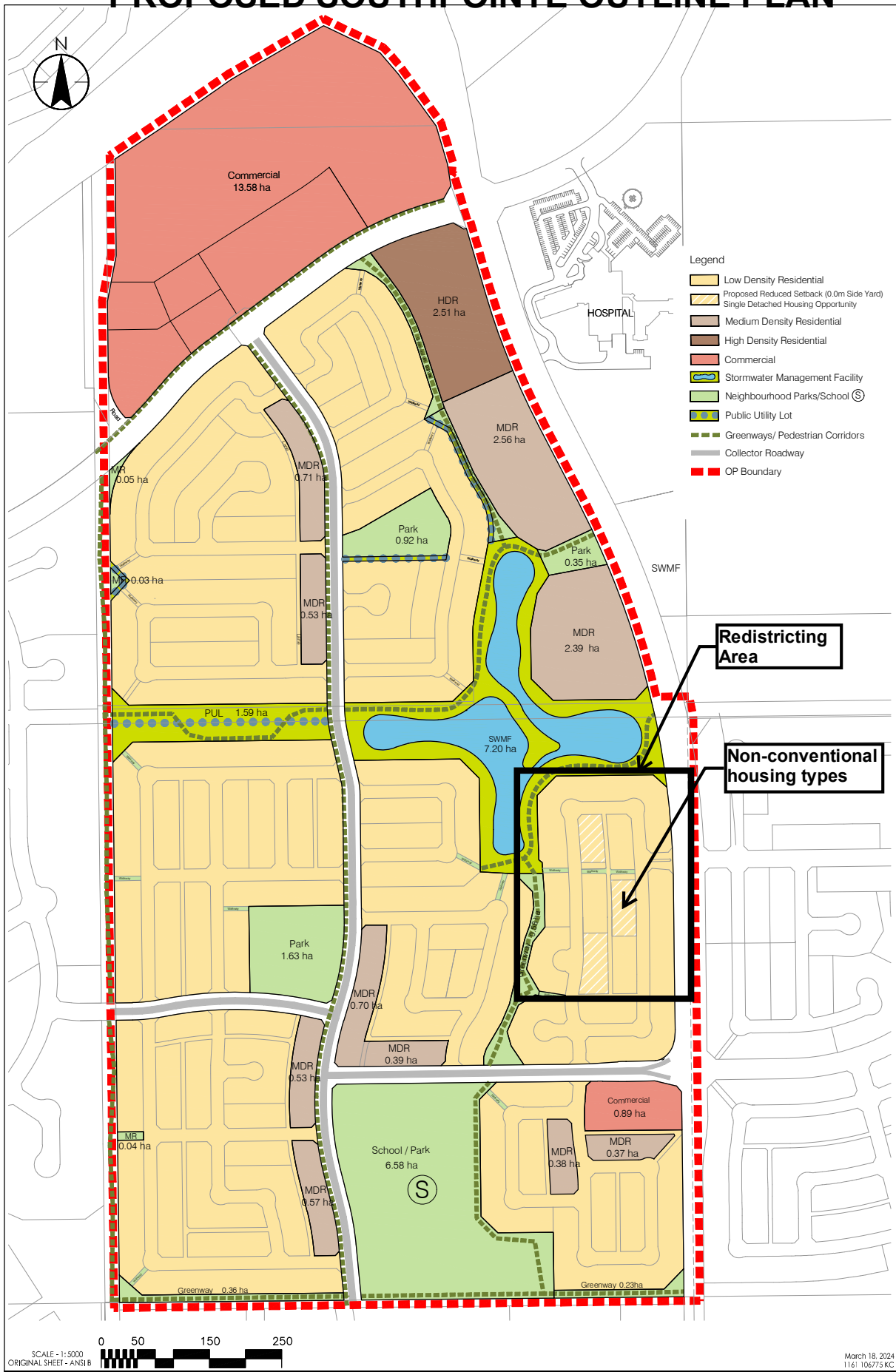
# MAPS

## SLDR - Southpointe Low Density Residential District



DISCLAIMER: The information shown is for reference only. The City of Fort Saskatchewan disclaims all responsibility for the accuracy, completeness, timelines and merchantability of information shown. Use this information at your own risk.

# PROPOSED SOUTHPOINTE OUTLINE PLAN



U:\116111420\drawing\ddaming\09\_Corridor\op Amend\_SouthPointe\_18mar2024.dwg



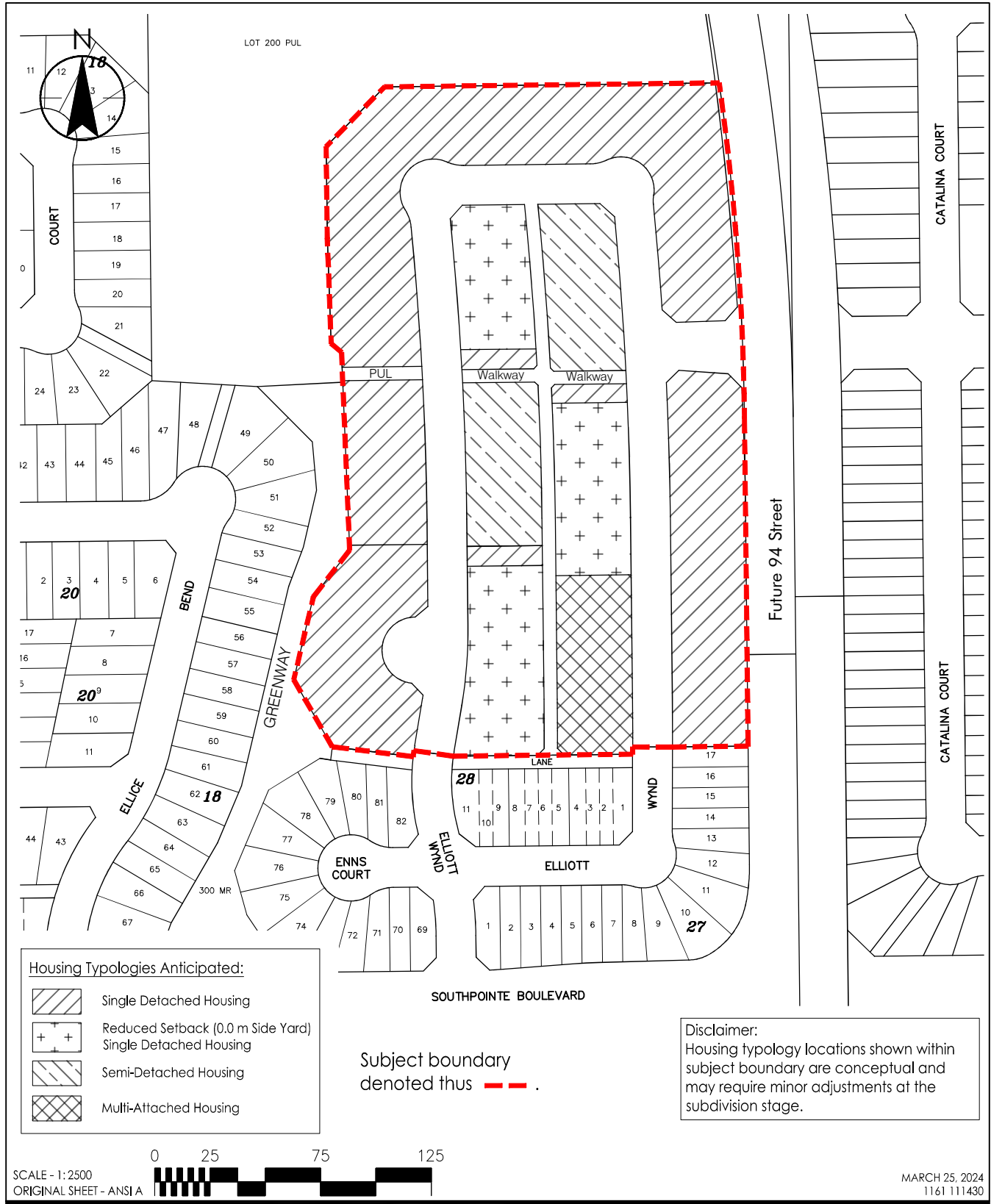
101 60-112 Street  
Edmonton, AB T5K 2L6  
www.stantec.com

**Note:** All sizes, locations, and areas depicted are conceptual. Actual location & size will be determined through the redistricting and subdivision approval process. The number, size, and location of future school sites may change in response to student demographics. Building of new schools and other institutional uses is dependent upon provincial funding. This map is provided for reference purposes only, and the City of Fort Saskatchewan assumes no obligation or liability for the use of the map data. Official versions of all land use maps and related information can be obtained from Planning & Development Services (780-992-6180).

Client/Project  
Southpointe Estates Ltd.  
Southpointe  
City of Fort Saskatchewan  
Figure No.  
1.0  
Title  
Outline Plan

March 18, 2024  
1161 106775 KC

# HOUSING TYPOLOGY LOCATIONS



U:\116111430\drawing\planning\rezoning\appendix\_i\_rz\_southpointe\_north\_25mar2024.dwg



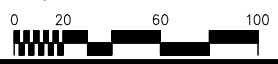
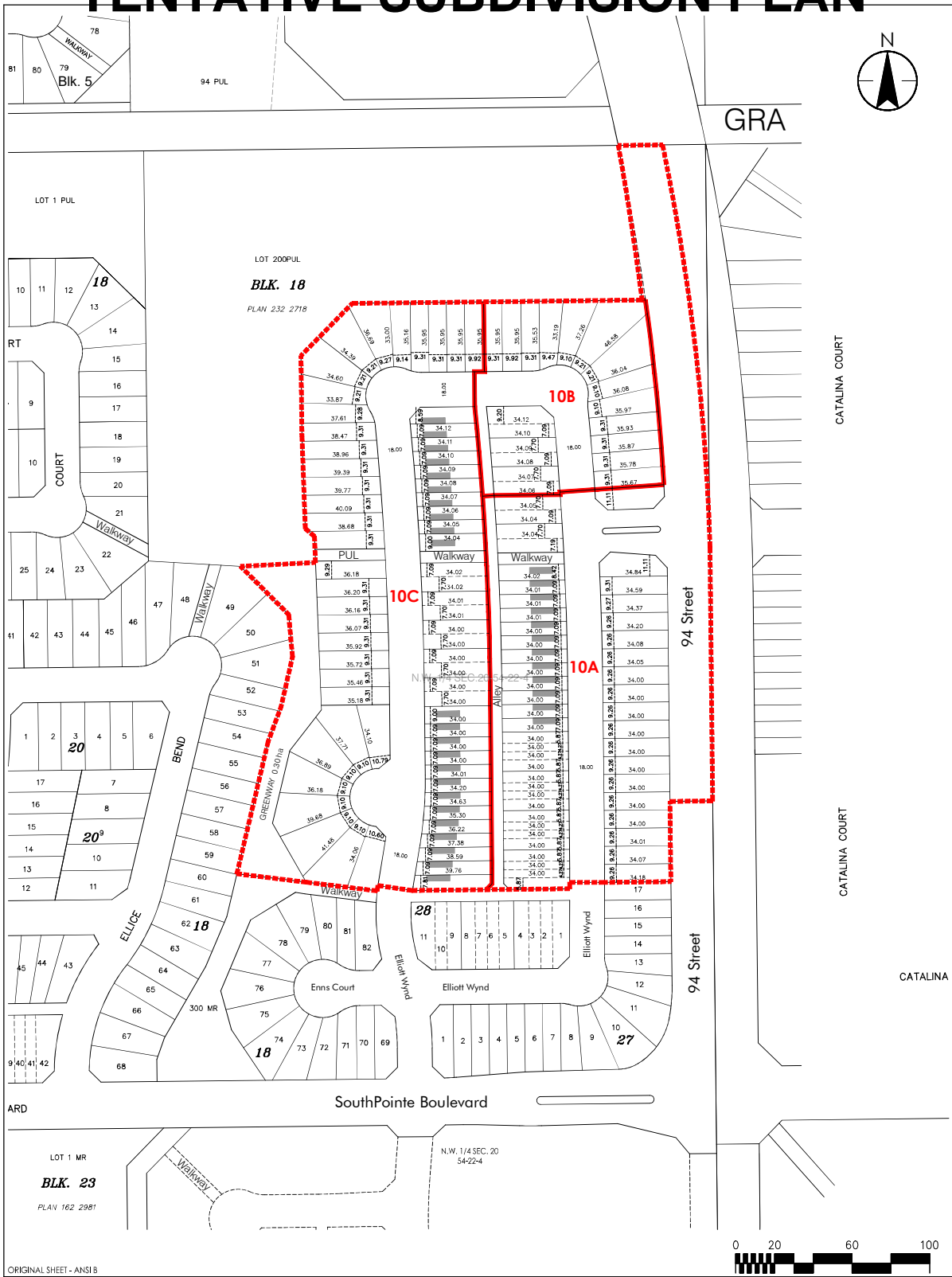
300-10220 103 Avenue  
Edmonton, AB T5J 0K4  
www.stantec.com

Client/Project  
SOUTHPOINTE ESTATES INC.  
SOUTHPOINTE  
REZONING APPLICATION

Figure No.

Title  
APPENDIX I

# TENTATIVE SUBDIVISION PLAN



ORIGINAL SHEET - ANSB



**Stantec**  
 400-10220 103 Avenue  
 Edmonton, AB T5J 0K4  
 Tel. 780.917.7000  
 www.stantec.com

Copyright Reserved  
 The Contractor shall verify and be responsible for all dimensions. DO NOT scale the drawings - any errors or omissions shall be reported to Stantec without delay.  
 The Copyrights to all designs and drawings are the property of Stantec. Reproduction or use for any purpose other than that authorized by Stantec is forbidden.

**Notes**  
 All distances are expressed in metres and decimals thereof.  
 Area to be subdivided outlined thus  and contains approximately 6.64 hectares, including 136 residential lots.

Revision	By	Y/M/D

**Client/Project**  
 SOUTHPOINTE ESTATES INC.  
 PLAN SHOWING PROPOSED SUBDIVISION  
 OF PORTION OF N.W. 1/4 SEC. 20-54-22-4

Fort Saskatchewan, AB

**Title**  
 TENTATIVE PLAN OF SUBDIVISION  
 SOUTHPOINTE STAGE 10

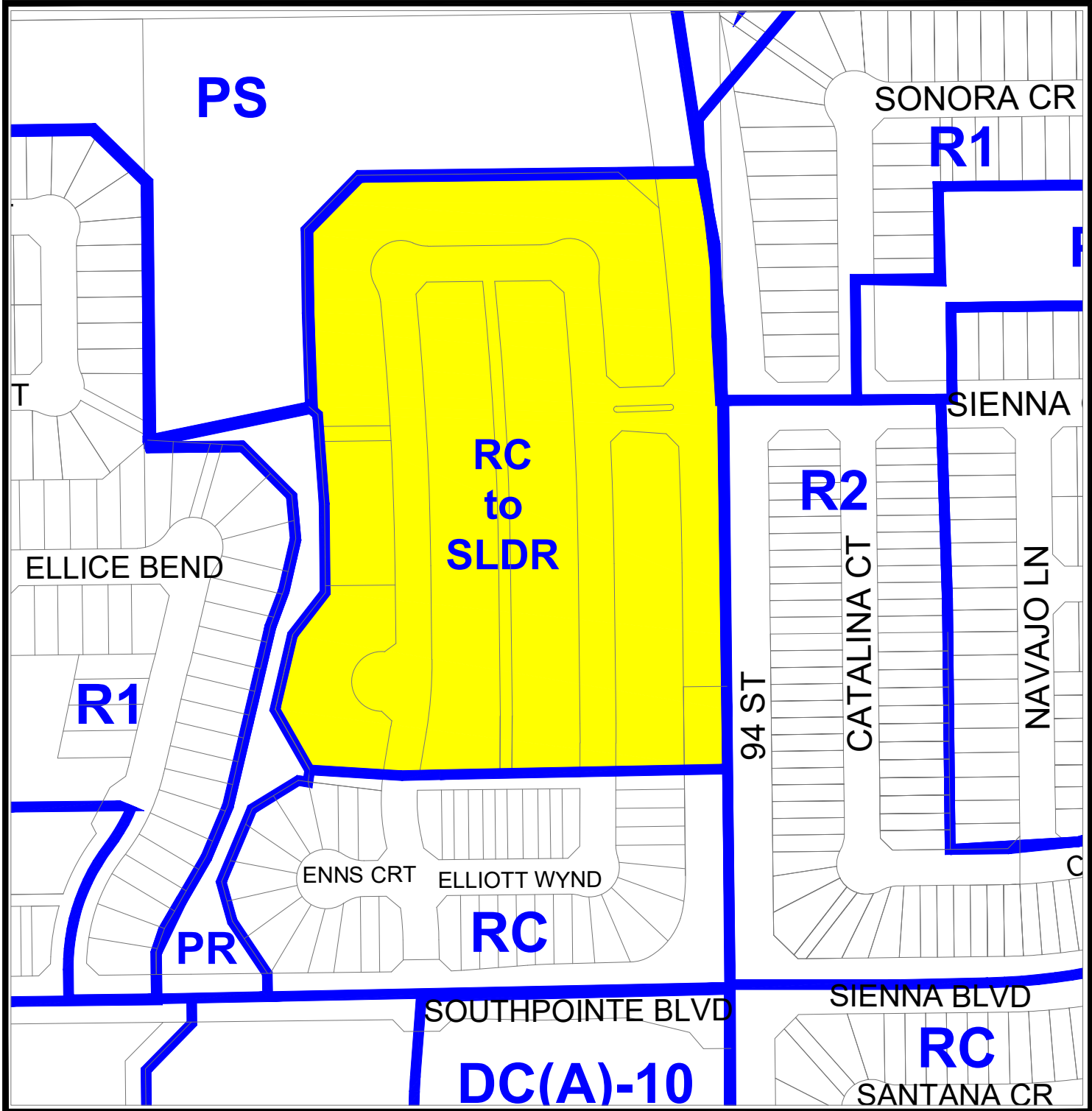
**Project No.**  
 1161 111430

**Scale**  
 1:2000

FEBRUARY 7, 2024

U:\116111430\dwg\planning\subdivision\subd\_southpointe\_stage\_10\_07feb2024.dwg  
 2024/02/07 2:04 PM By: Rachmi, Bryan

# Bylaw C5-24 Schedule "B"



Part of NW1/4-20-54-22-W4M

 RC to SLDR