



Scale 1:5,000

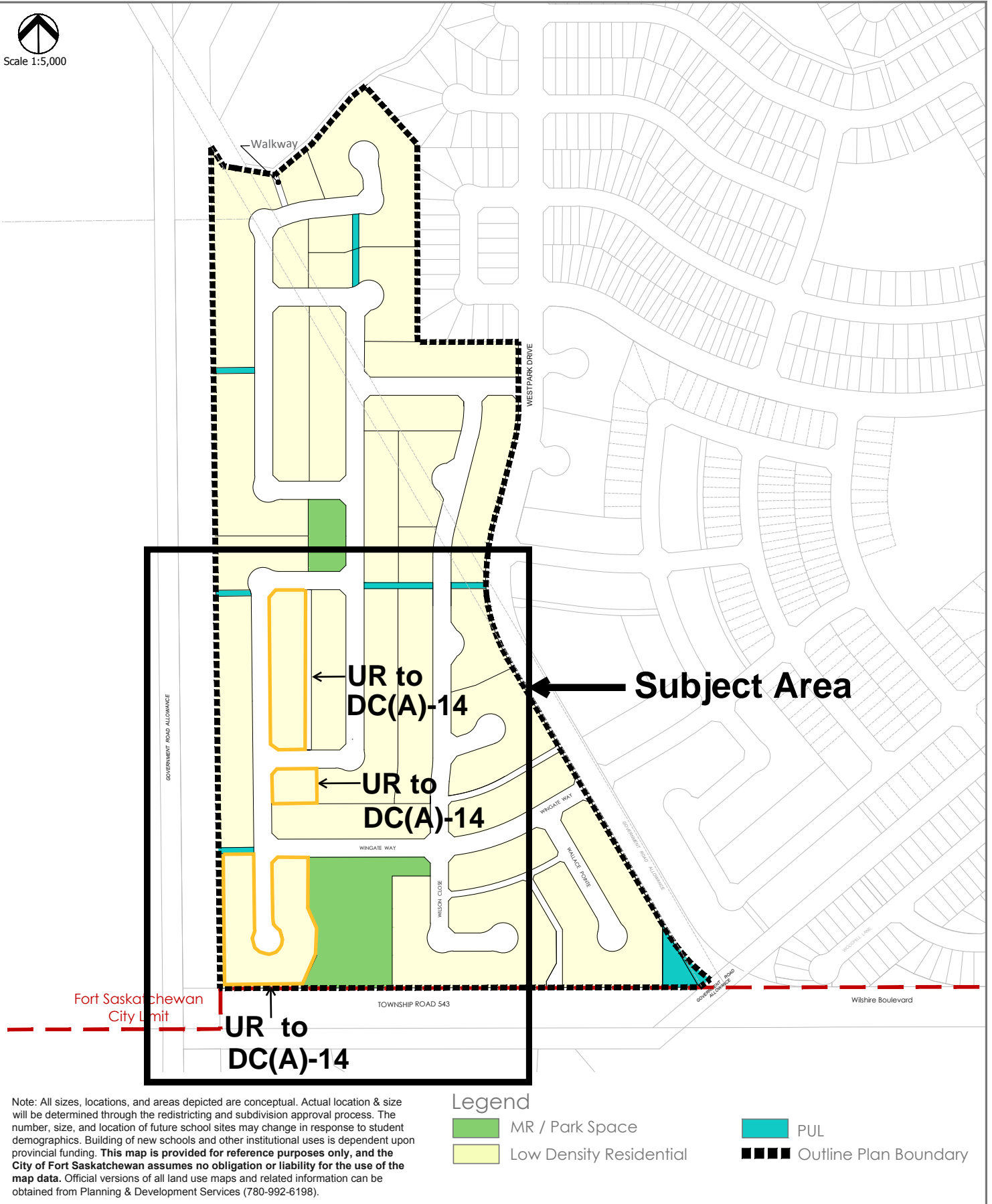
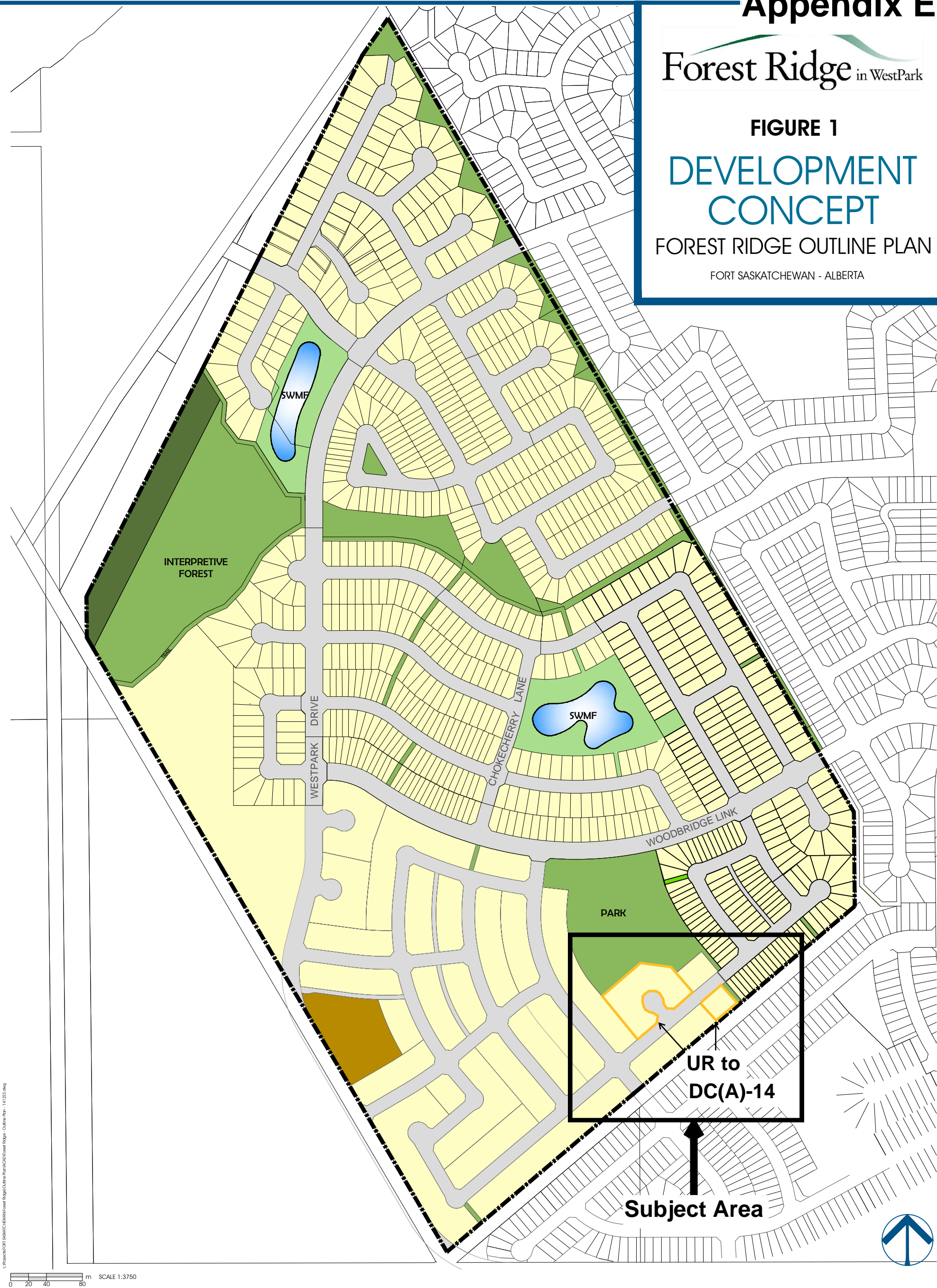


FIGURE 1

DEVELOPMENT  
CONCEPT

FOREST RIDGE OUTLINE PLAN

FORT SASKATCHEWAN - ALBERTA



LEGEND

- Outline Plan Boundary
- Low Density Residential
- Medium Density Residential
- Park / Open Space
- Storm Water Management Facility (Dry Pond)
- Environmental Reserve

**Note:** Qualico has prepared this concept plan as a guide for future development. This is not an approved document and is subject to change without notice.

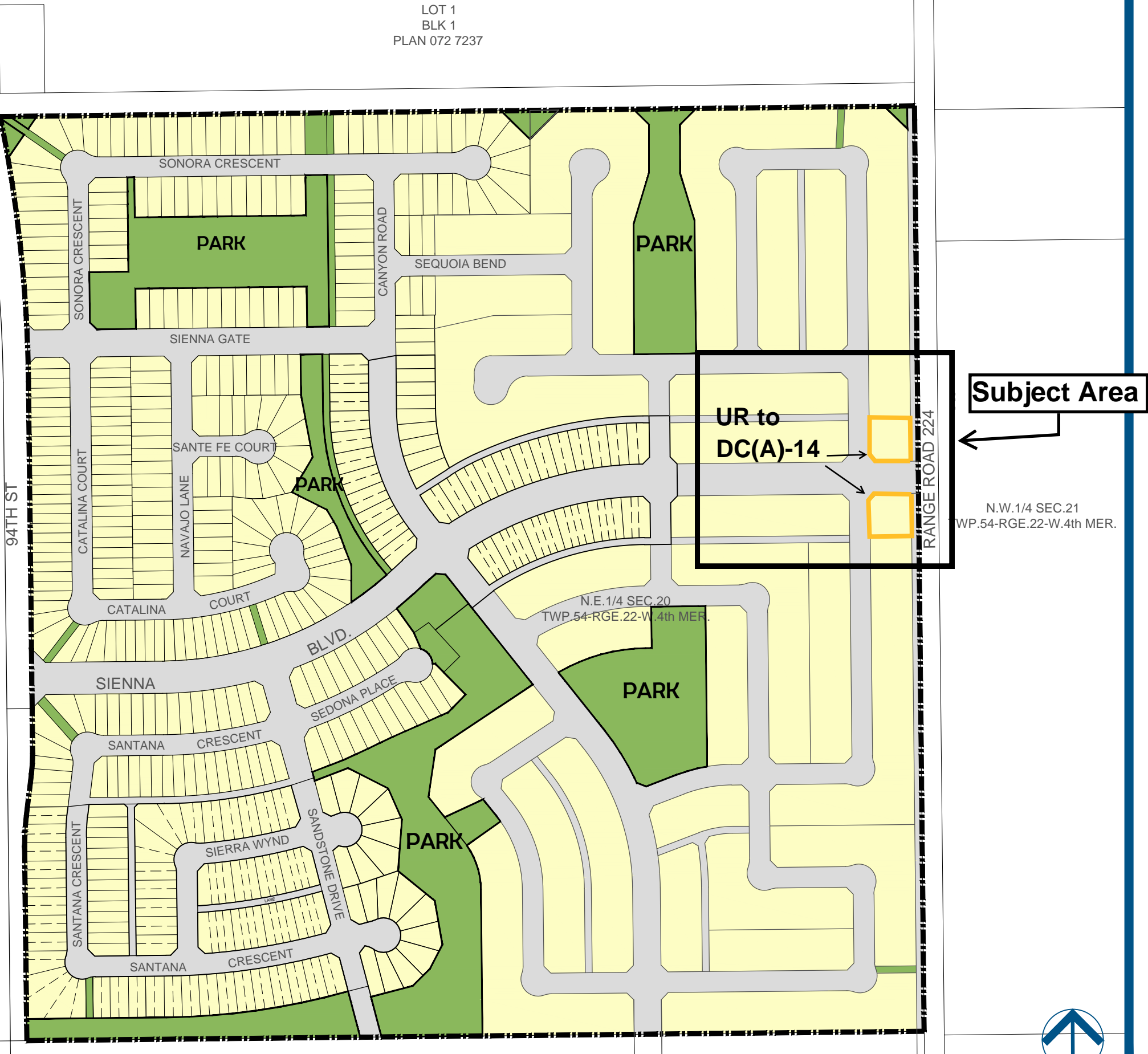
All sizes, locations, and areas depicted are conceptual. Actual location & size will be determined through the redistricting and subdivision approval process. The number, size, and location of future school sites may change in response to student demographics. Building of new schools and other institutional uses is dependent upon provincial funding.

**This map is provided for reference purposes only, and the City of Fort Saskatchewan assumes no obligation or liability for the use of the map data.** Official versions of all land use maps and related information can be obtained from Planning & Development Services (780-992-6180).



FIGURE 1  
DEVELOPMENT  
CONCEPT  
SIENNA OUTLINE PLAN

FORT SASKATCHEWAN - ALBERTA



- LEGEND
- Outline Plan Boundary
  - Low Density Residential
  - Park / Open Space / PUL

Note:  
Qualico has prepared this concept plan as a guide for future development. This is not an approved document and is subject to change without notice.

All sizes, locations, and areas depicted are conceptual. Actual location & size will be determined through the redistricting and subdivision approval process. The number, size, and location of future school sites may change in response to student demographics. Building of new schools and other institutional uses is dependent upon provincial funding.

This map is provided for reference purposes only, and the City of Fort Saskatchewan assumes no obligation or liability for the use of the map data. Official versions of all land use maps and related information can be obtained from Planning & Development Services (780-992-6180).



December 22, 2014